

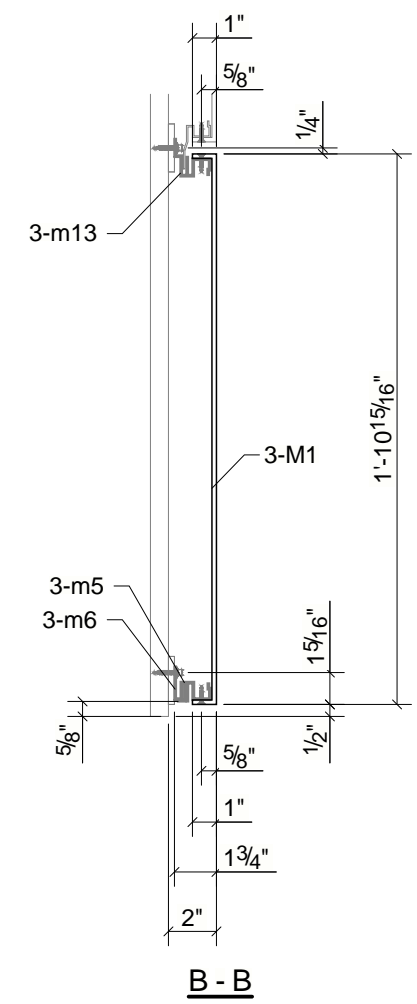
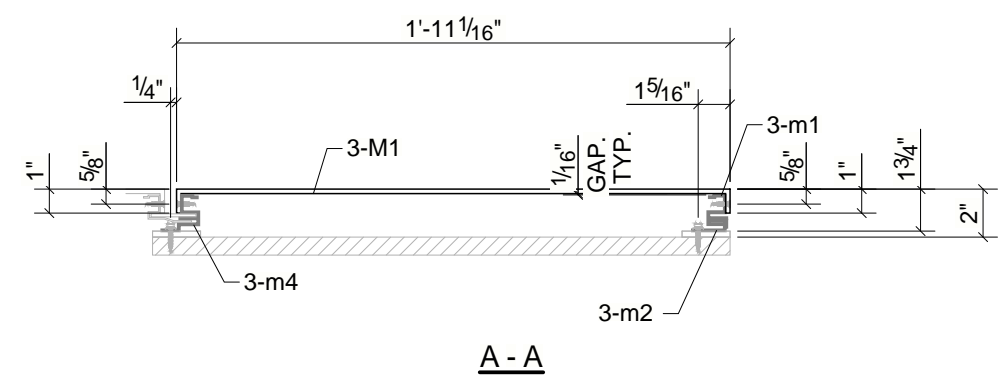
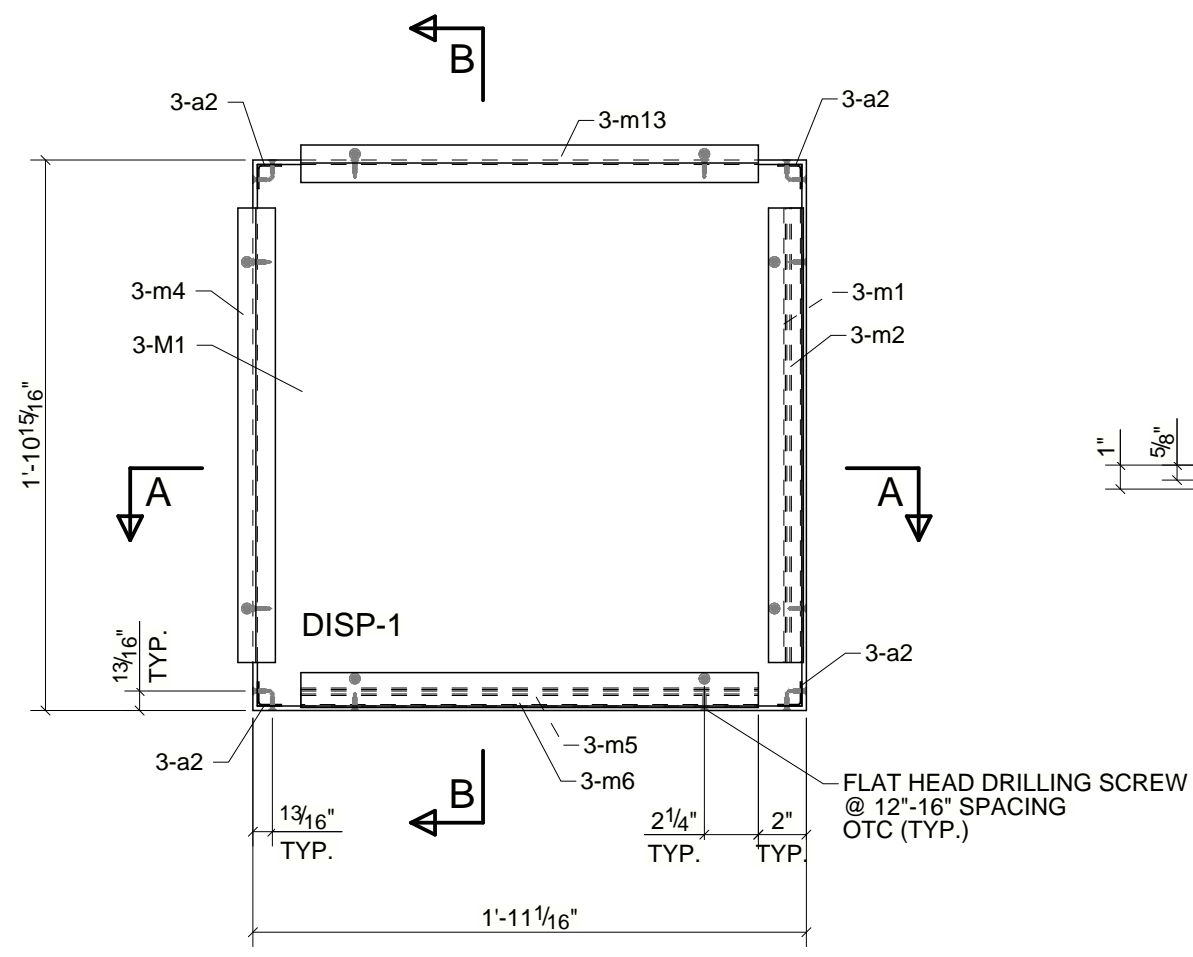
ISSUED FOR FABRICATION

QA/QC HOLD POINTS

	FABRICATOR	DATE	SUPERVISOR	DATE
LAYOUT				
FIT				
WELD				
FINAL				

BILL OF MATERIAL

MARK	QTY	DESCRIPTION	LENGTH	WEIGHT	REMARKS
3-M1	1	ACM_PANEL			
3-M1	1	PL3/16"X22 15/16"	1'-11 1/16"	10.80	6061-T6 ALUMINUM
3-a2	4	L1"X1"X1/16"	0'-0 3/4"	0.03	6061-T6 ALUMINUM
3-m1	1	EFME	1'-6 15/16"	0.47	6061-T6 ALUMINUM
3-m2	1	SE1/16"	1'-6 15/16"	0.28	6061-T6 ALUMINUM
3-m4	1	FME	1'-6 15/16"	0.58	6061-T6 ALUMINUM
3-m5	1	EFME	1'-7 1/16"	0.48	6061-T6 ALUMINUM
3-m6	1	SE1/16"	1'-7 1/16"	0.28	6061-T6 ALUMINUM
3-m13	1	FME	1'-7 1/16"	0.58	6061-T6 ALUMINUM
TOTAL WEIGHT THIS DRAWING				13.51	



ONE - ACM_PANEL - 3-M1

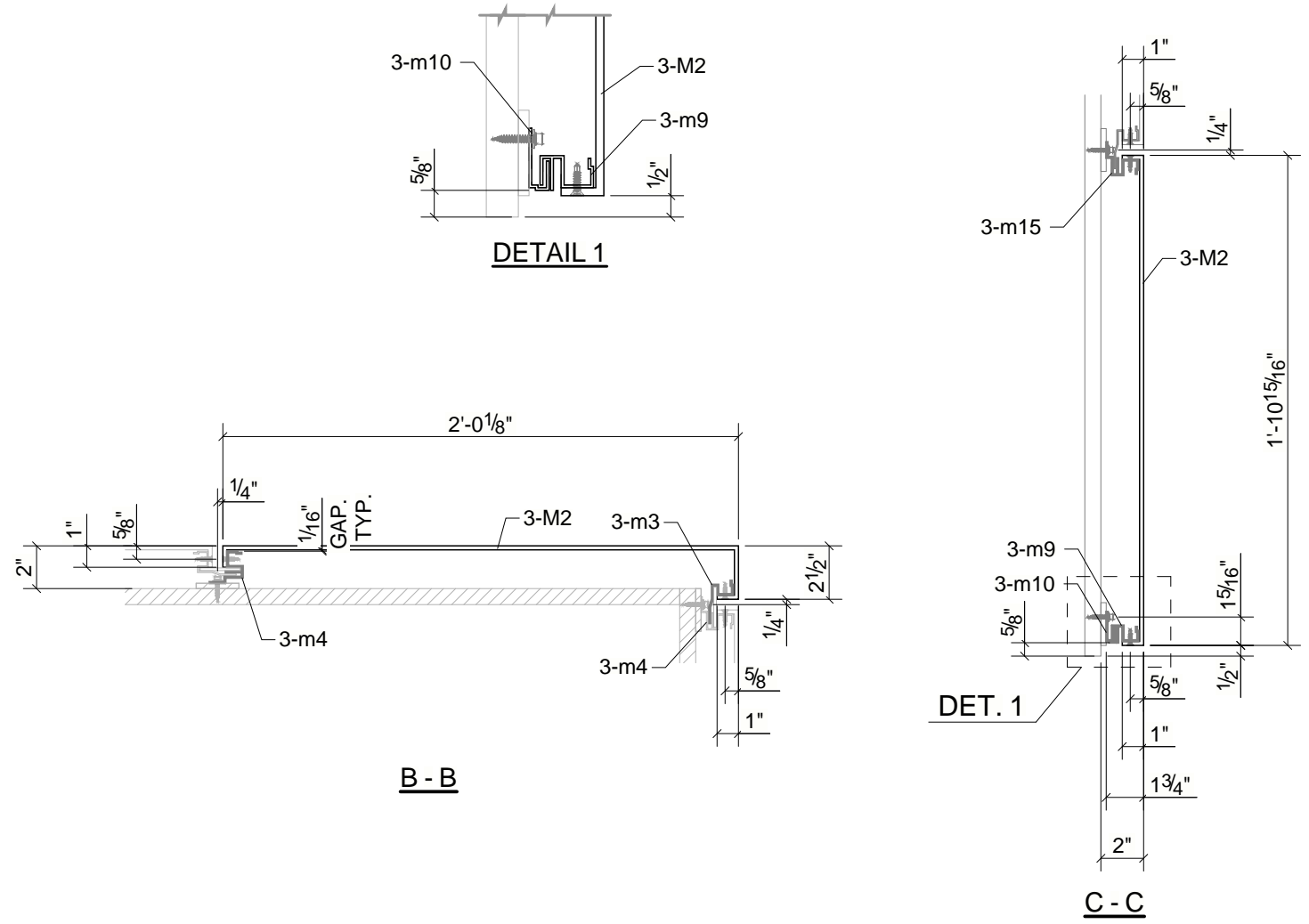
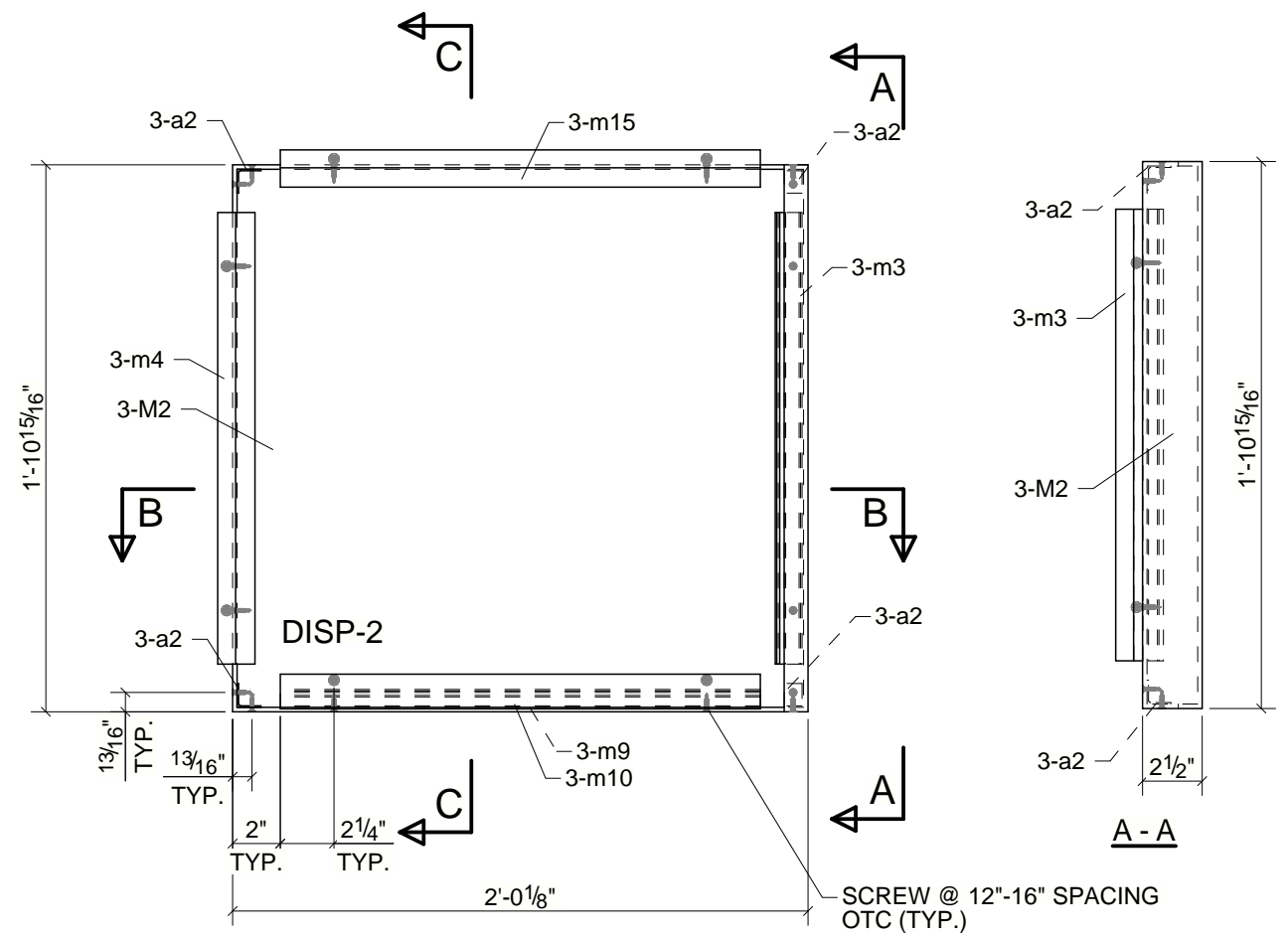
ISSUED FOR FABRICATION

QA/QC HOLD POINTS

	FABRICATOR	DATE	SUPERVISOR	DATE
LAYOUT				
FIT				
WELD				
FINAL				

BILL OF MATERIAL

MARK	QTY	DESCRIPTION	LENGTH	WEIGHT	REMARKS
3-M2	1	ACM_PANEL			
3-M2	1	PL3/16"X22 15/16"	2'-2 5/8"	12.25	6061-T6 ALUMINUM
3-a2	4	L1"X1"X1/16"	0'-0 3/4"	0.03	6061-T6 ALUMINUM
3-m3	1	ME1/16"	1'-6 15/16"	0.44	6061-T6 ALUMINUM
3-m4	1	FME	1'-6 15/16"	0.58	6061-T6 ALUMINUM
3-m9	1	EFME	1'-8 1/8"	0.50	6061-T6 ALUMINUM
3-m10	1	SE1/16"	1'-8 1/8"	0.30	6061-T6 ALUMINUM
3-m15	1	FME	1'-8 1/8"	0.62	6061-T6 ALUMINUM
TOTAL WEIGHT THIS DRAWING				14.72	



ONE - ACM_PANEL - 3-M2

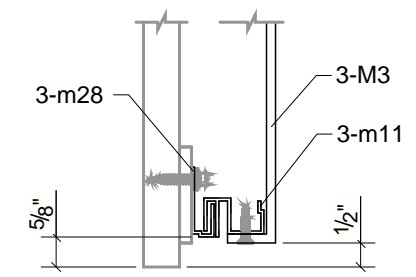
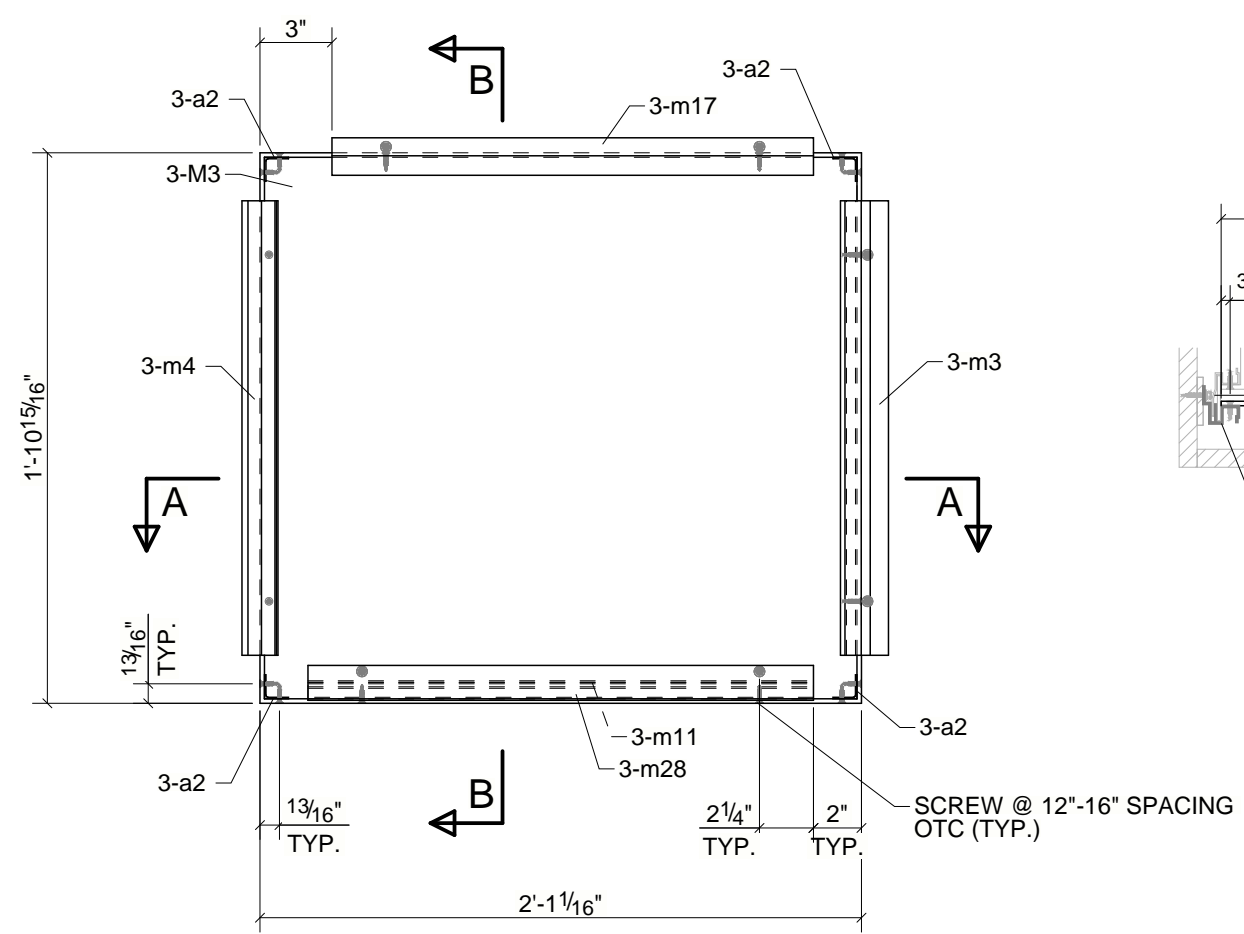
ISSUED FOR FABRICATION

QA/QC HOLD POINTS

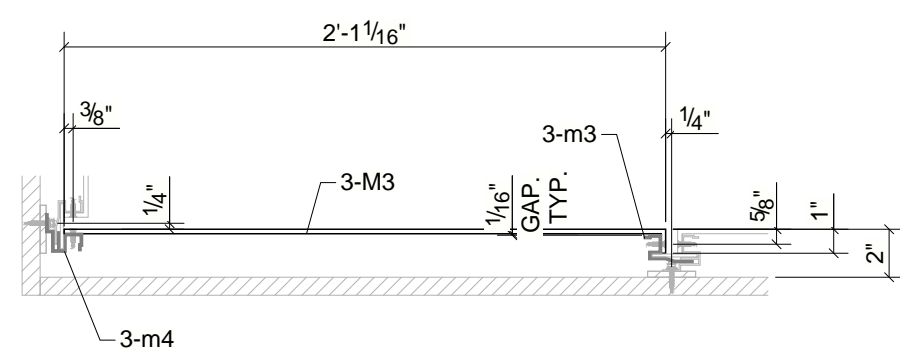
	FABRICATOR	DATE	SUPERVISOR	DATE
LAYOUT				
FIT				
WELD				
FINAL				

BILL OF MATERIAL

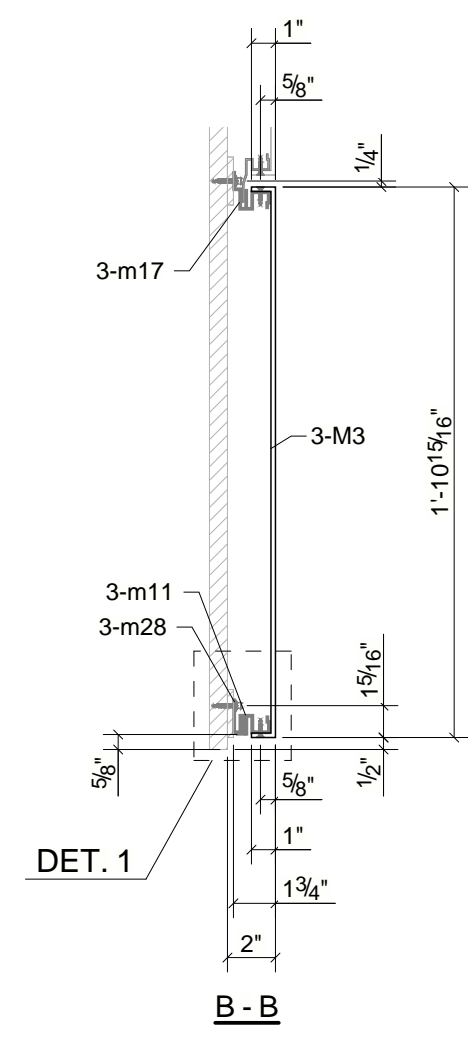
MARK	QTY	DESCRIPTION	LENGTH	WEIGHT	REMARKS
3-M3	1	ACM_PANEL			
3-M3	1	PL3/16"X22 15/16"	2'-1 1/16"	11.40	6061-T6 ALUMINUM
3-a2	4	L1"X1"X1/16"	0'-0 3/4"	0.03	6061-T6 ALUMINUM
3-m3	1	ME1/16"	1'-6 15/16"	0.44	6061-T6 ALUMINUM
3-m4	1	FME	1'-6 15/16"	0.58	6061-T6 ALUMINUM
3-m11	1	EFME	1'-9 1/16"	0.53	6061-T6 ALUMINUM
3-m17	1	FME	1'-8 1/16"	0.61	6061-T6 ALUMINUM
3-m28	1	SE1/16"	1'-9 1/16"	0.31	6061-T6 ALUMINUM
TOTAL WEIGHT THIS DRAWING				13.91	



DETAIL 1



A - A



B - B

ONE - ACM_PANEL - 3-M3

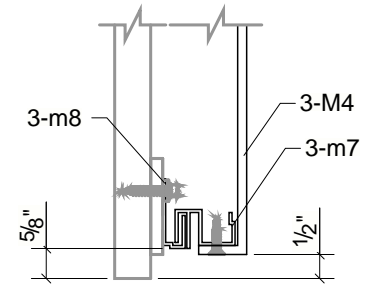
ISSUED FOR FABRICATION

QA/QC HOLD POINTS

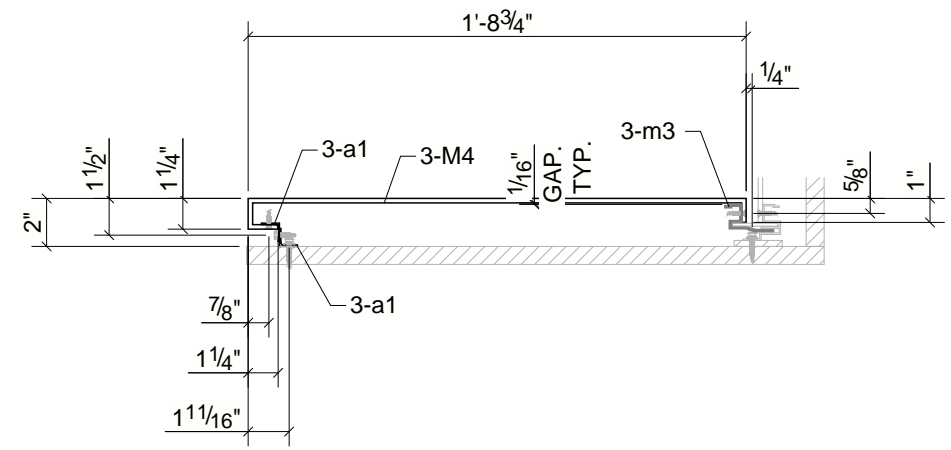
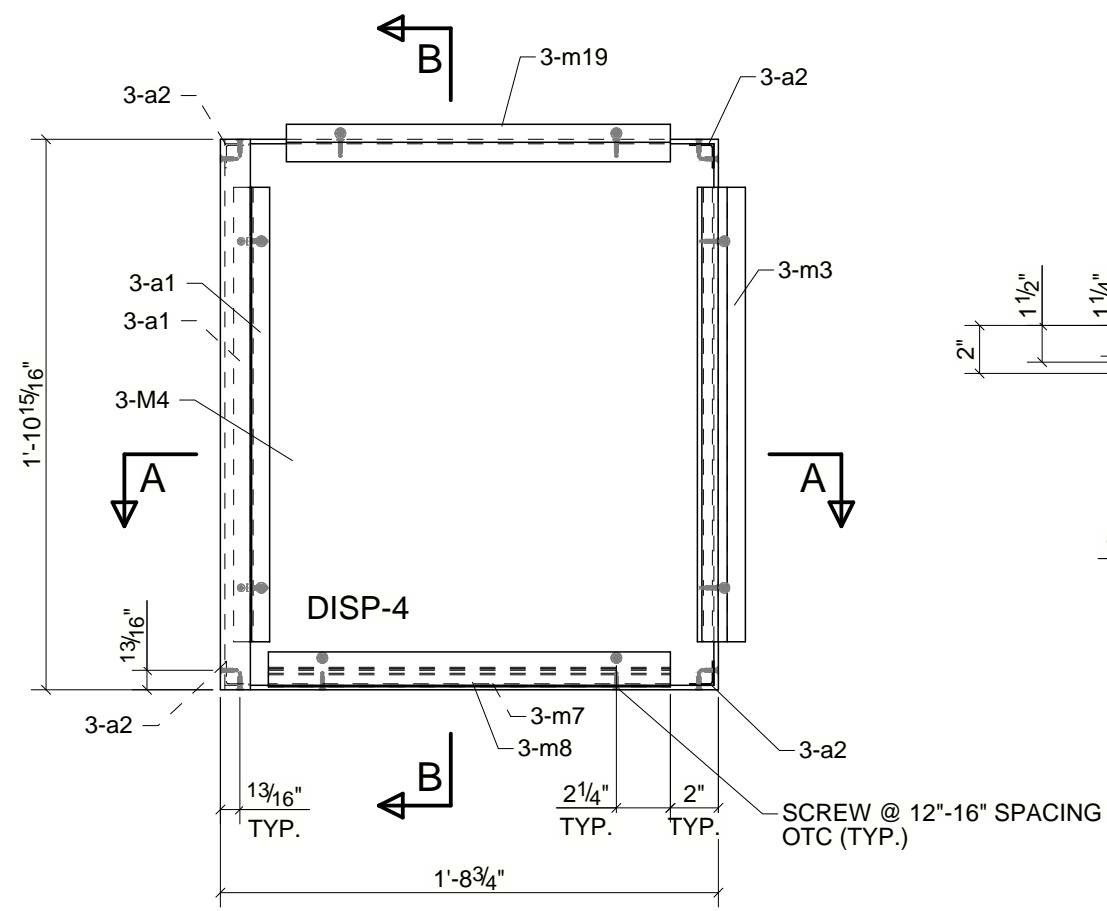
	FABRICATOR	DATE	SUPERVISOR	DATE
LAYOUT				
FIT				
WELD				
FINAL				

BILL OF MATERIAL

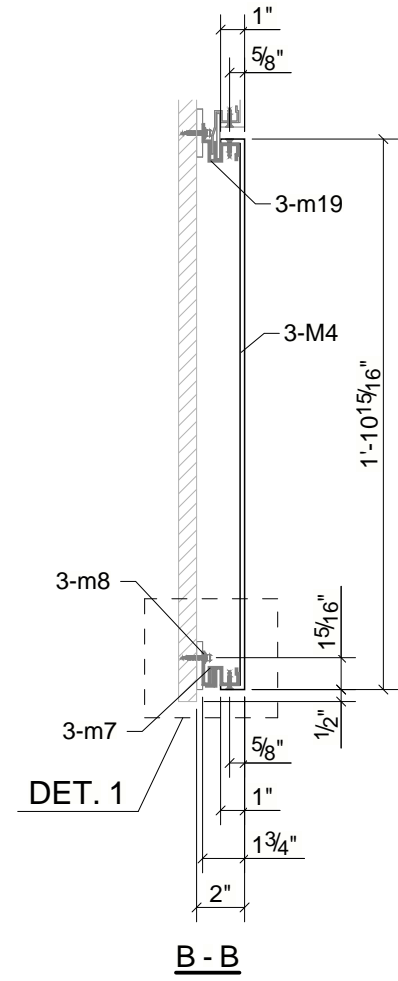
MARK	QTY	DESCRIPTION	LENGTH	WEIGHT	REMARKS
3-M4	1	ACM_PANEL			
3-M4	1	PL3/16"X22 15/16"	1'-10"	10.33	6061-T6 ALUMINUM
3-a1	2	L3/4"X3/4"X1/16"	1'-6 15/16"	0.33	6061-T6 ALUMINUM
3-a2	4	L1"X1"X1/16"	0'-0 3/4"	0.03	6061-T6 ALUMINUM
3-m3	1	ME1/16"	1'-6 15/16"	0.44	6061-T6 ALUMINUM
3-m7	1	EFME	1'-4 3/4"	0.42	6061-T6 ALUMINUM
3-m8	1	SE1/16"	1'-4 3/4"	0.25	6061-T6 ALUMINUM
3-m19	1	FME	1'-4"	0.49	6061-T6 ALUMINUM
TOTAL WEIGHT THIS DRAWING				12.29	



DETAIL 1



A - A



B - B

ONE - ACM_PANEL - 3-M4

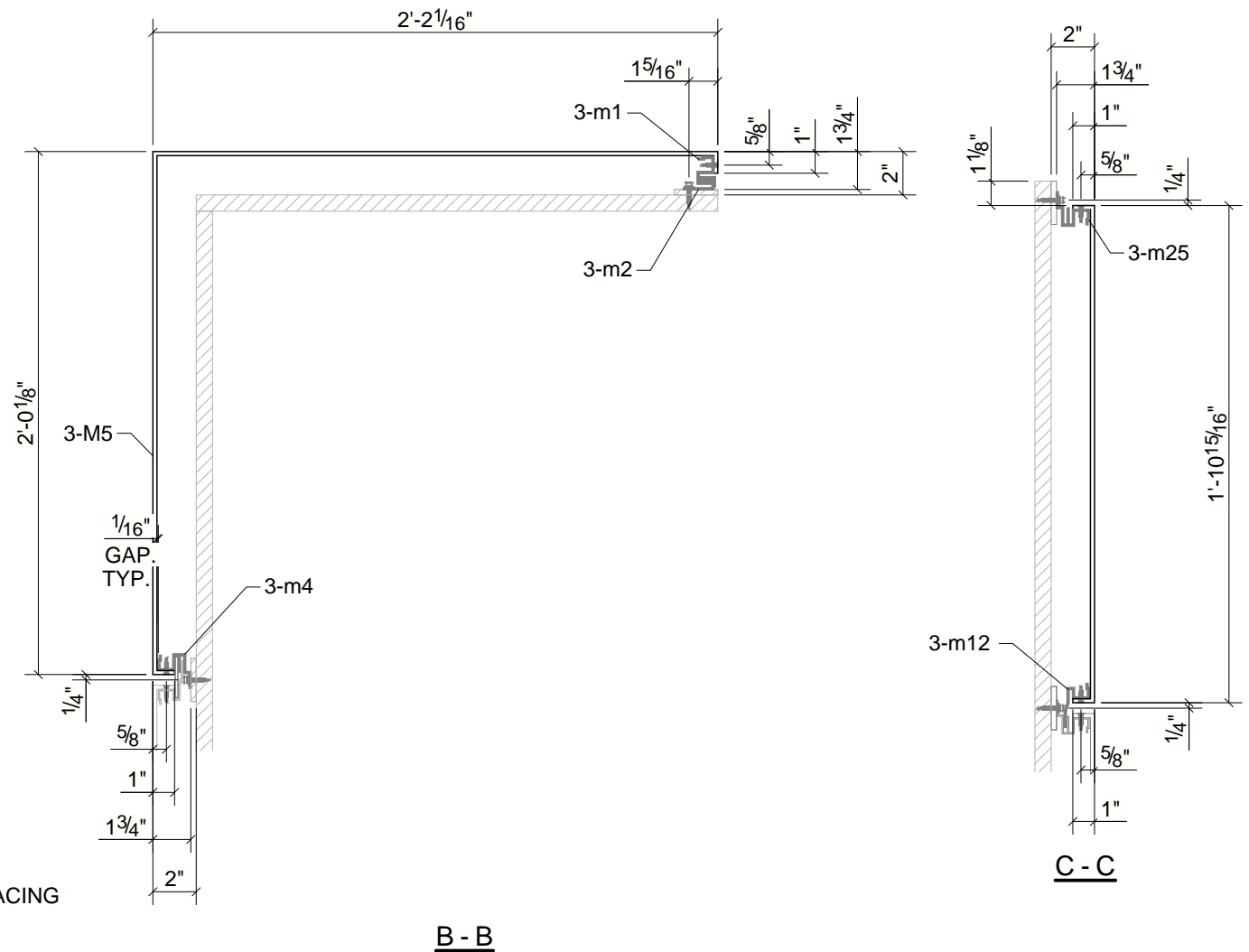
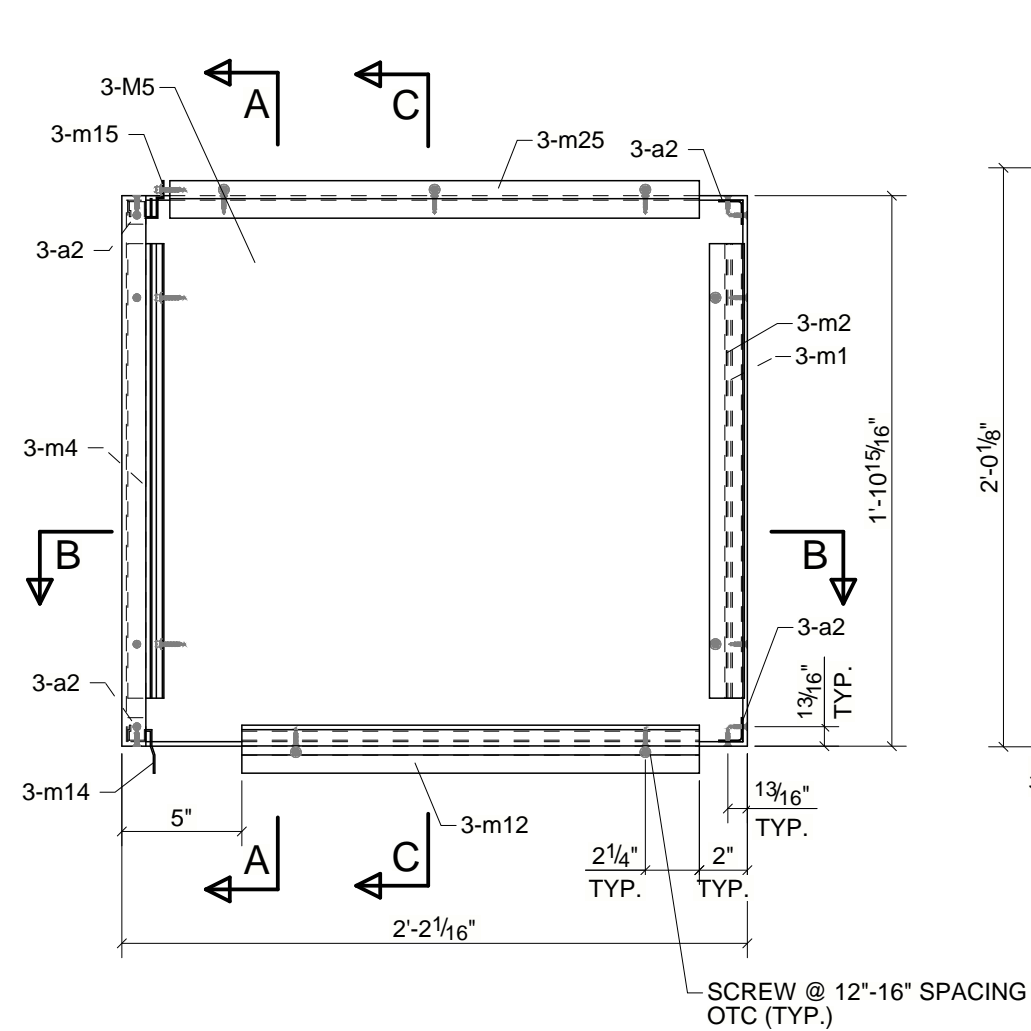
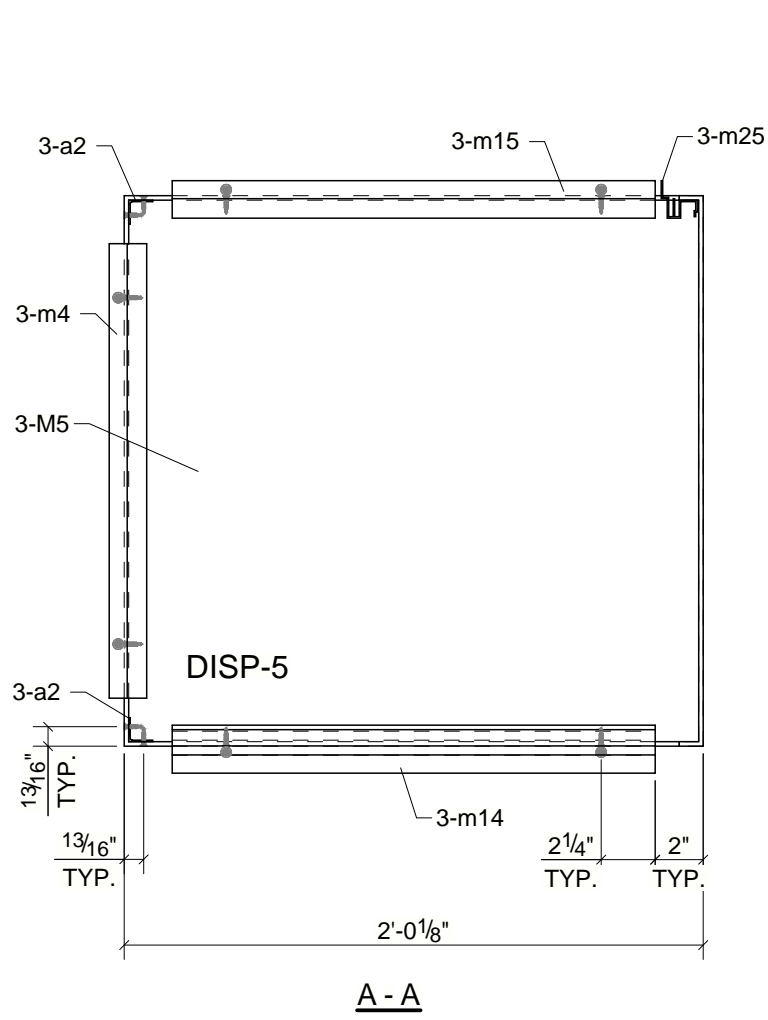
ISSUED FOR FABRICATION

QA/QC HOLD POINTS

	FABRICATOR	DATE	SUPERVISOR	DATE
LAYOUT				
FIT				
WELD				
FINAL				

BILL OF MATERIAL

MARK	QTY	DESCRIPTION	LENGTH	WEIGHT	REMARKS
3-M5	1	ACM_PANEL			
3-M5	1	PL3/16"X22 15/16"	4'-2 3/16"	22.62	6061-T6 ALUMINUM
3-a2	4	L1"x1"x1/16"	0'-0 3/4"	0.03	6061-T6 ALUMINUM
3-m1	1	EFME	1'-6 15/16"	0.47	6061-T6 ALUMINUM
3-m2	1	SE1/16"	1'-6 15/16"	0.28	6061-T6 ALUMINUM
3-m4	1	FME	1'-6 15/16"	0.58	6061-T6 ALUMINUM
3-m12	1	ME1/16"	1'-7 1/16"	0.44	6061-T6 ALUMINUM
3-m14	1	ME1/16"	1'-8 1/8"	0.47	6061-T6 ALUMINUM
3-m15	1	FME	1'-8 1/8"	0.62	6061-T6 ALUMINUM
3-m25	1	FME	1'-10 1/16"	0.67	6061-T6 ALUMINUM
TOTAL WEIGHT THIS DRAWING				26.19	



ONE - ACM_PANEL - 3-M5

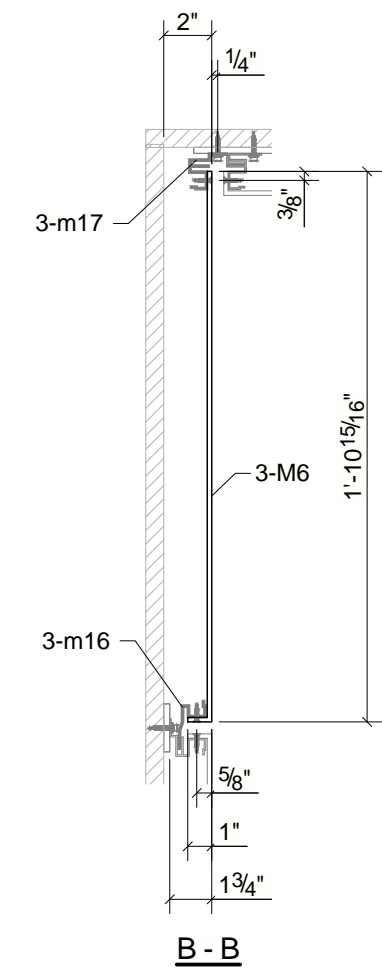
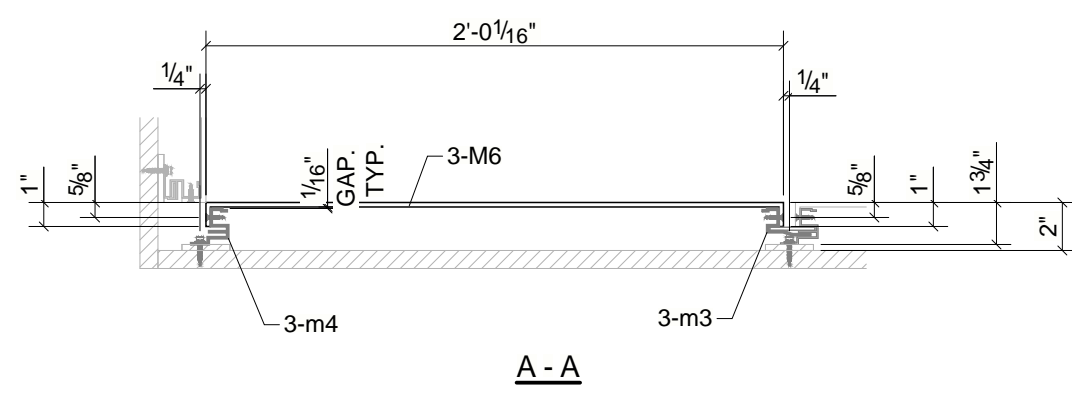
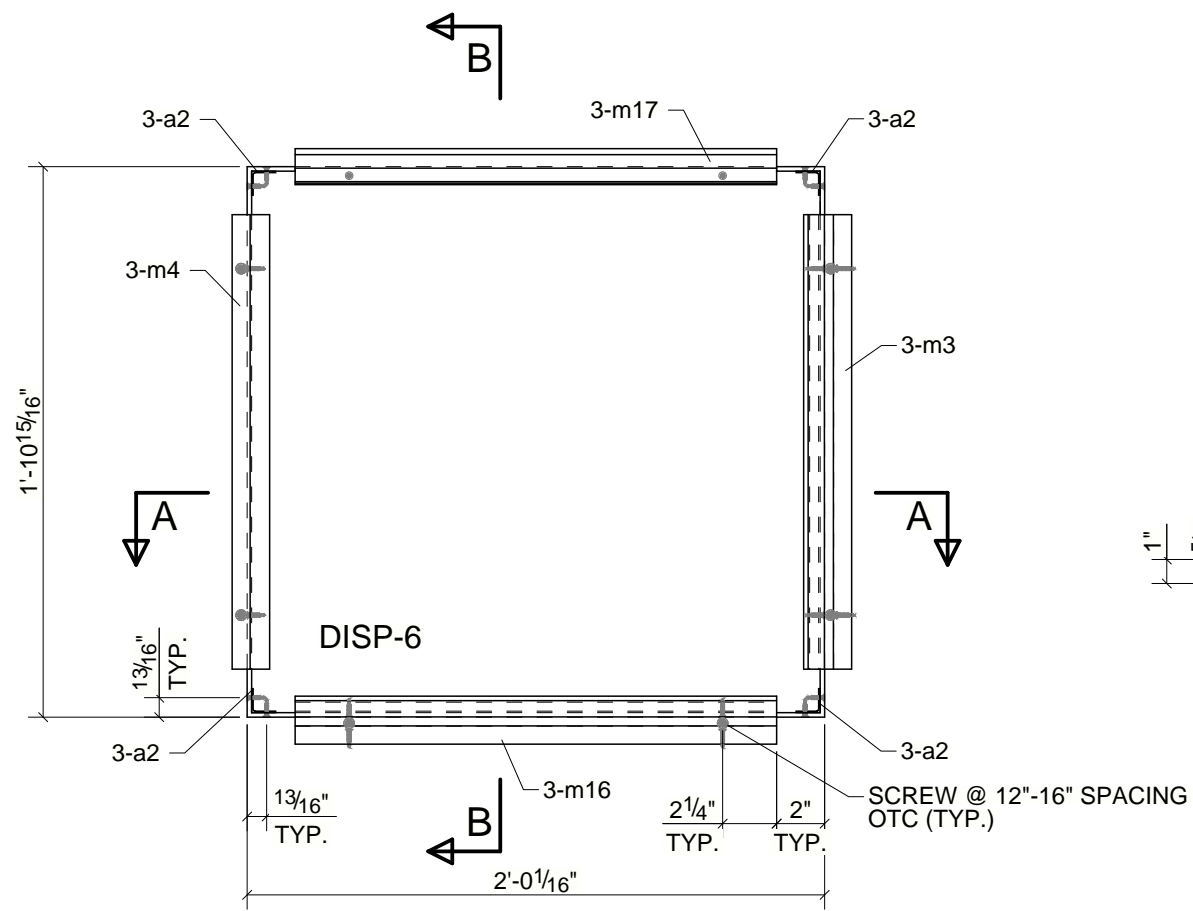
ISSUED FOR FABRICATION

QA/QC HOLD POINTS

	FABRICATOR	DATE	SUPERVISOR	DATE
LAYOUT				
FIT				
WELD				
FINAL				

BILL OF MATERIAL

MARK	QTY	DESCRIPTION	LENGTH	WEIGHT	REMARKS
3-M6	1	ACM_PANEL			
3-M6	1	PL3/16"X22 15/16"	2'-0 1/16"	10.95	6061-T6 ALUMINUM
3-a2	4	L1"X1"X1/16"	0'-0 3/4"	0.03	6061-T6 ALUMINUM
3-m3	1	ME1/16"	1'-6 15/16"	0.44	6061-T6 ALUMINUM
3-m4	1	FME	1'-6 15/16"	0.58	6061-T6 ALUMINUM
3-m16	1	ME1/16"	1'-8 1/16"	0.47	6061-T6 ALUMINUM
3-m17	1	FME	1'-8 1/16"	0.61	6061-T6 ALUMINUM
TOTAL WEIGHT THIS DRAWING				13.08	



ONE - ACM_PANEL - 3-M6

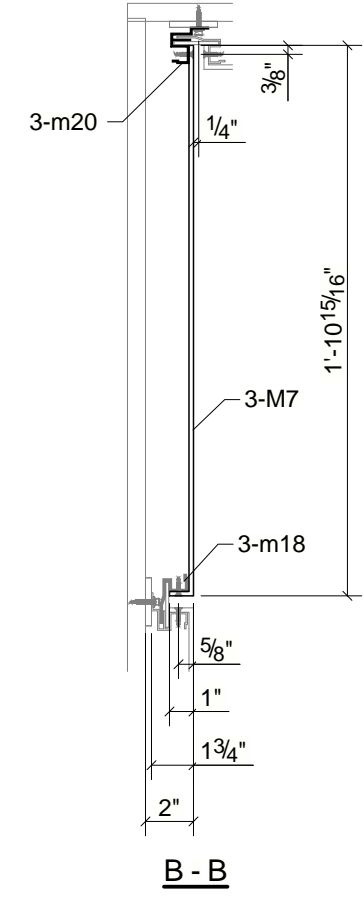
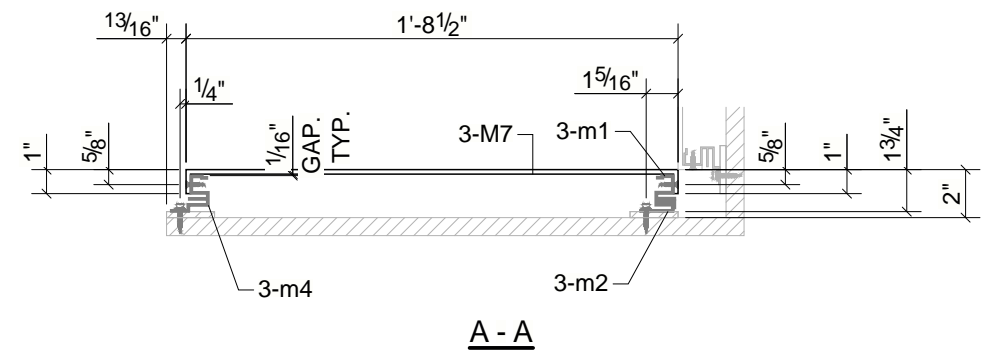
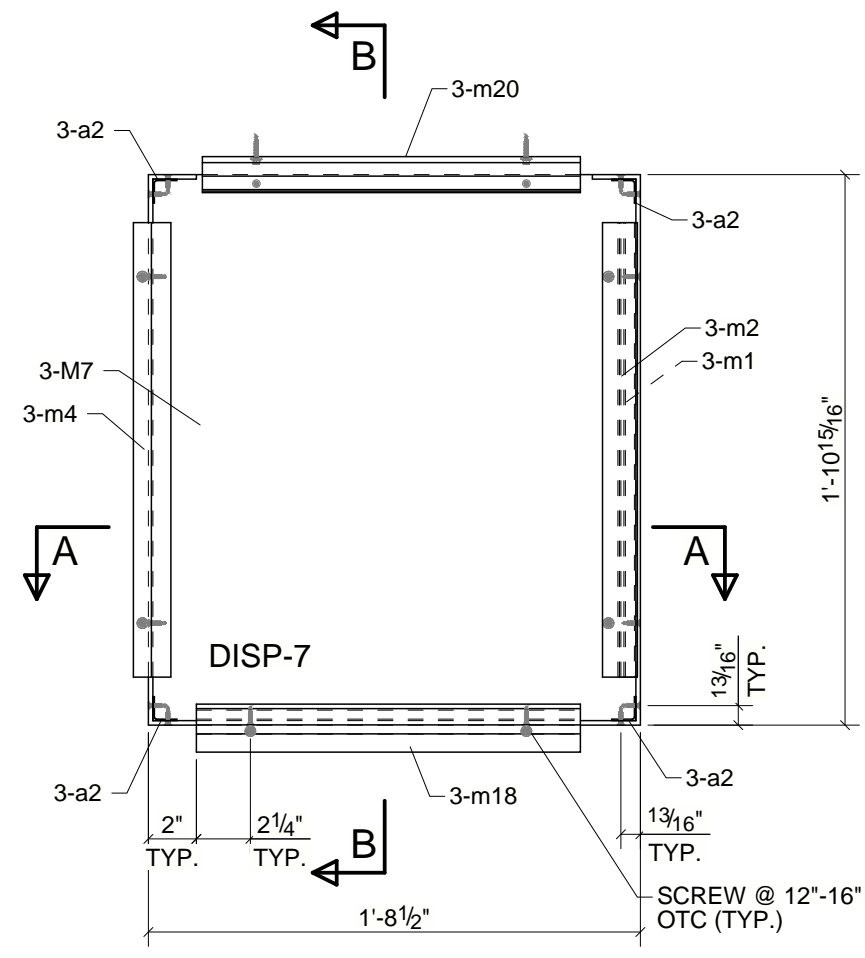
ISSUED FOR FABRICATION

QA/QC HOLD POINTS

	FABRICATOR	DATE	SUPERVISOR	DATE
LAYOUT				
FIT				
WELD				
FINAL				

BILL OF MATERIAL

MARK	QTY	DESCRIPTION	LENGTH	WEIGHT	REMARKS
3-M7	1	ACM_PANEL			
3-M7	1	PL3/16"X20 1/2"	1'-10 15/16"	9.43	6061-T6 ALUMINUM
3-a2	4	L1"X1"X1/16"	0'-0 3/4"	0.03	6061-T6 ALUMINUM
3-m1	1	EFME	1'-6 15/16"	0.47	6061-T6 ALUMINUM
3-m2	1	SE1/16"	1'-6 15/16"	0.28	6061-T6 ALUMINUM
3-m4	1	FME	1'-6 15/16"	0.58	6061-T6 ALUMINUM
3-m18	1	ME1/16"	1'-4"	0.37	6061-T6 ALUMINUM
3-m20	1	FME	1'-3 3/4"	0.48	6061-T6 ALUMINUM
TOTAL WEIGHT THIS DRAWING				11.65	



ONE - ACM_PANEL - 3-M7

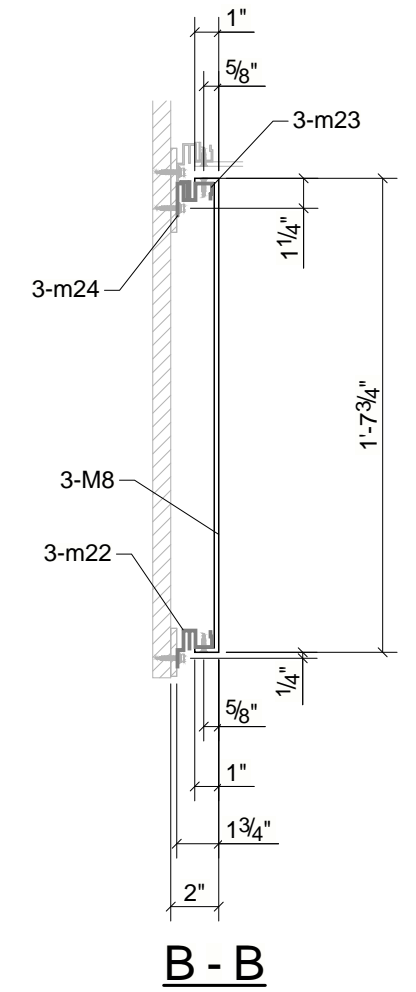
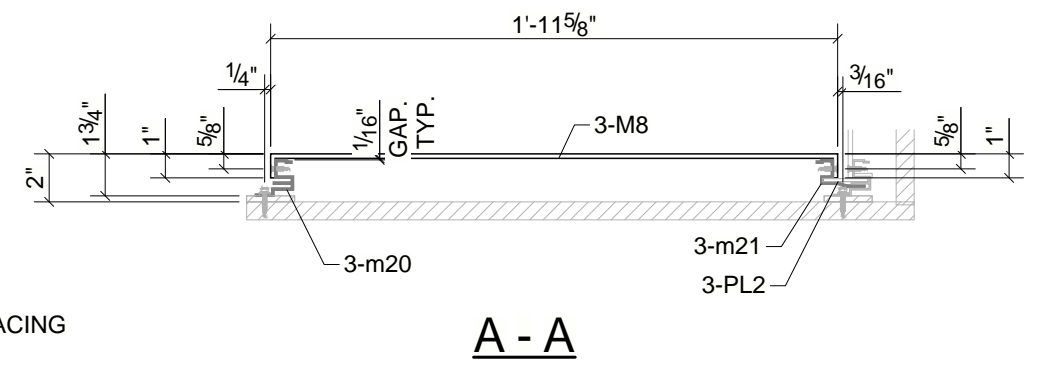
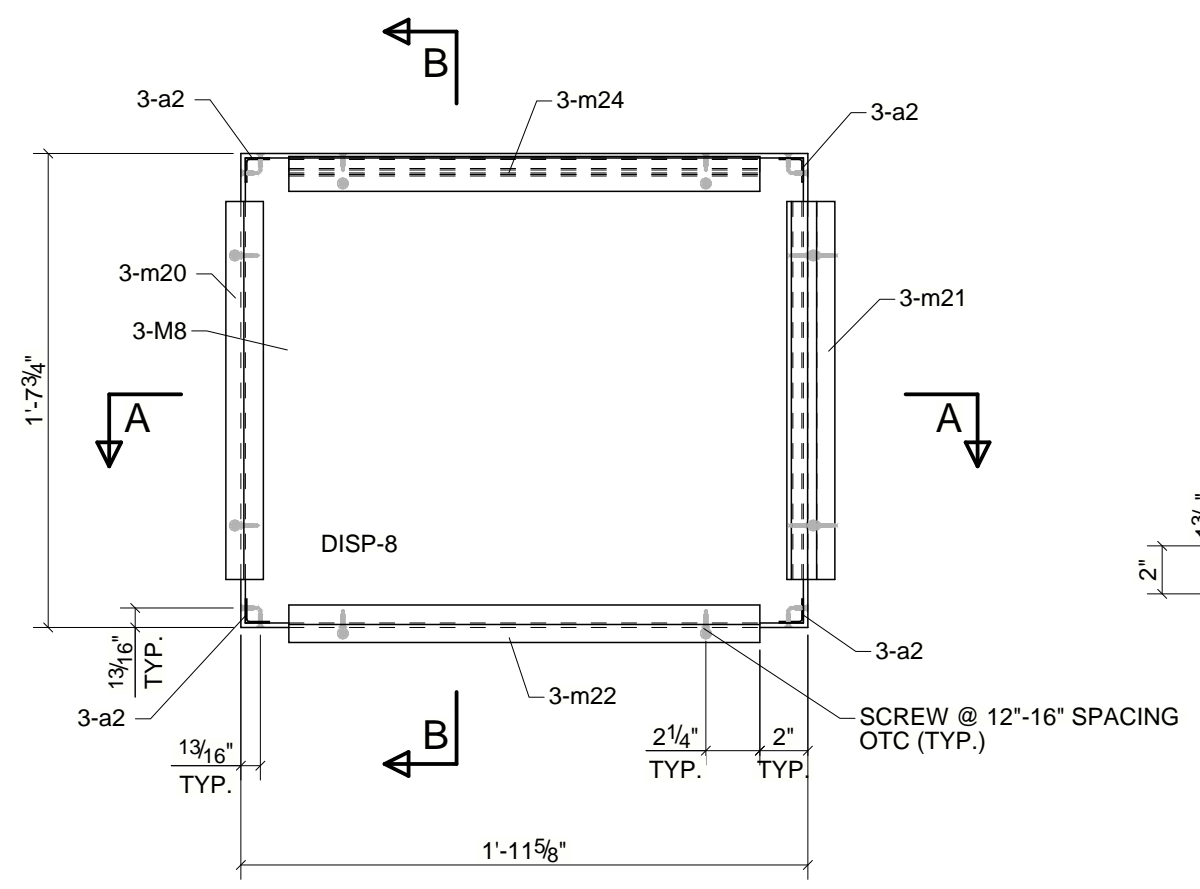
ISSUED FOR FABRICATION

QA/QC HOLD POINTS

	FABRICATOR	DATE	SUPERVISOR	DATE
LAYOUT				
FIT				
WELD				
FINAL				

BILL OF MATERIAL

MARK	QTY	DESCRIPTION	LENGTH	WEIGHT	REMARKS
3-M8	1	ACM_PANEL			
3-M8	1	PL3/16"X19 3/4"	1'-11 5/8"	9.61	6061-T6 ALUMINUM
3-a2	4	L1"X1"X1/16"	0'-0 3/4"	0.03	6061-T6 ALUMINUM
3-m20	1	FME	1'-3 3/4"	0.48	6061-T6 ALUMINUM
3-m21	1	ME1/16"	1'-3 3/4"	0.37	6061-T6 ALUMINUM
3-m22	1	FME	1'-7 5/8"	0.60	6061-T6 ALUMINUM
3-m23	1	EFME	1'-7 5/8"	0.49	6061-T6 ALUMINUM
3-m24	1	SE1/16"	1'-7 5/8"	0.29	6061-T6 ALUMINUM
TOTAL WEIGHT THIS DRAWING				11.87	



ONE - ACM_PANEL - 3-M8

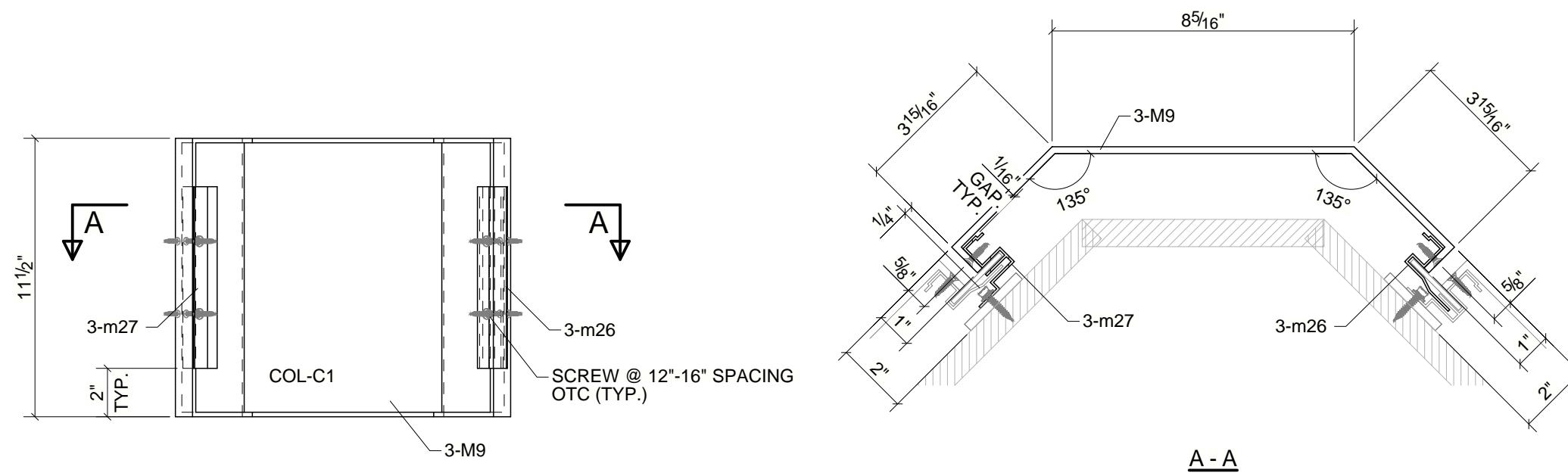
ISSUED FOR FABRICATION

QA/QC HOLD POINTS

	FABRICATOR	DATE	SUPERVISOR	DATE
LAYOUT				
FIT				
WELD				
FINAL				

BILL OF MATERIAL

MARK	QTY	DESCRIPTION	LENGTH	WEIGHT	REMARKS
3-M9	1	ACM_PANEL			
3-M9	1	PL3/16"X11 1/2"	1'-3 13/16"	4.05	6061-T6 ALUMINUM
3-m26	1	ME1/16"	0'-7 1/2"	0.17	6061-T6 ALUMINUM
3-m27	1	FME	0'-7 1/2"	0.23	6061-T6 ALUMINUM
TOTAL WEIGHT THIS DRAWING				4.46	



ONE - ACM_PANEL - 3-M9

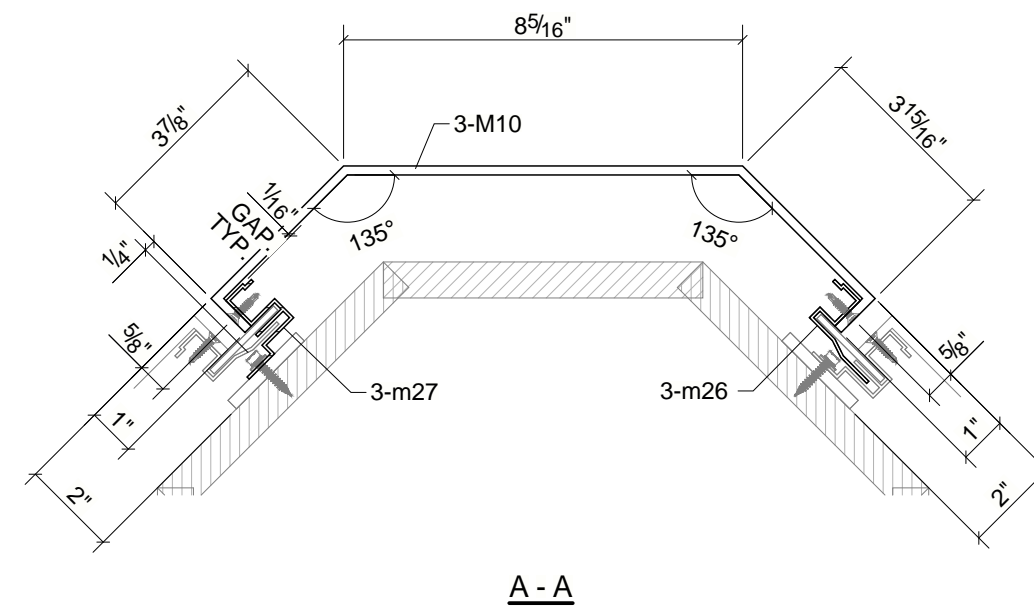
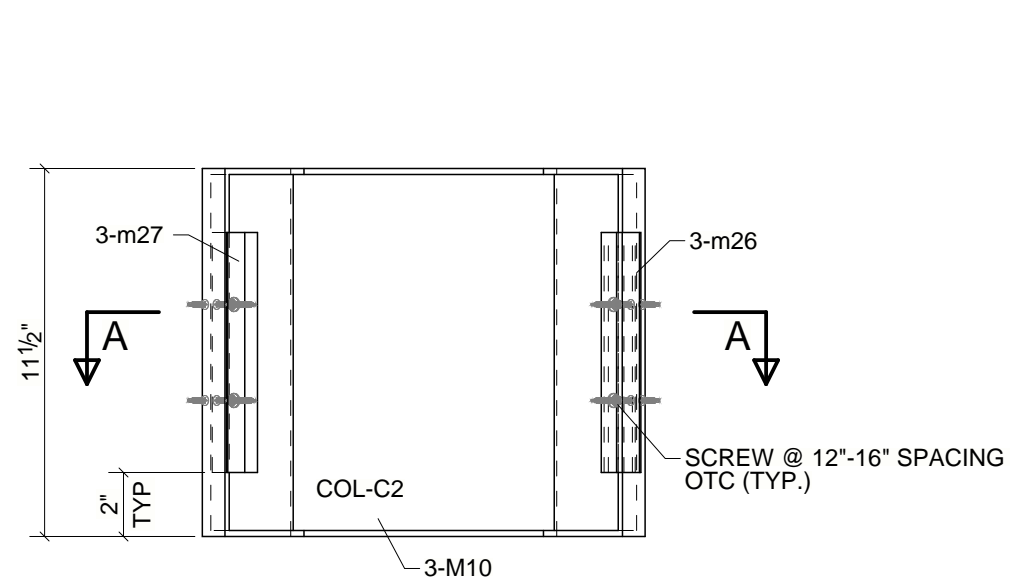
ISSUED FOR FABRICATION

QA/QC HOLD POINTS

	FABRICATOR	DATE	SUPERVISOR	DATE
LAYOUT				
FIT				
WELD				
FINAL				

BILL OF MATERIAL

MARK	QTY	DESCRIPTION	LENGTH	WEIGHT	REMARKS
3-M10	1	ACM_PANEL			
3-M10	1	PL3/16"X11 1/2"	1'-3 13/16"	4.05	6061-T6 ALUMINUM
3-m26	1	ME1/16"	0'-7 1/2"	0.17	6061-T6 ALUMINUM
3-m27	1	FME	0'-7 1/2"	0.23	6061-T6 ALUMINUM
TOTAL WEIGHT THIS DRAWING				4.46	



ONE - ACM_PANEL - 3-M10

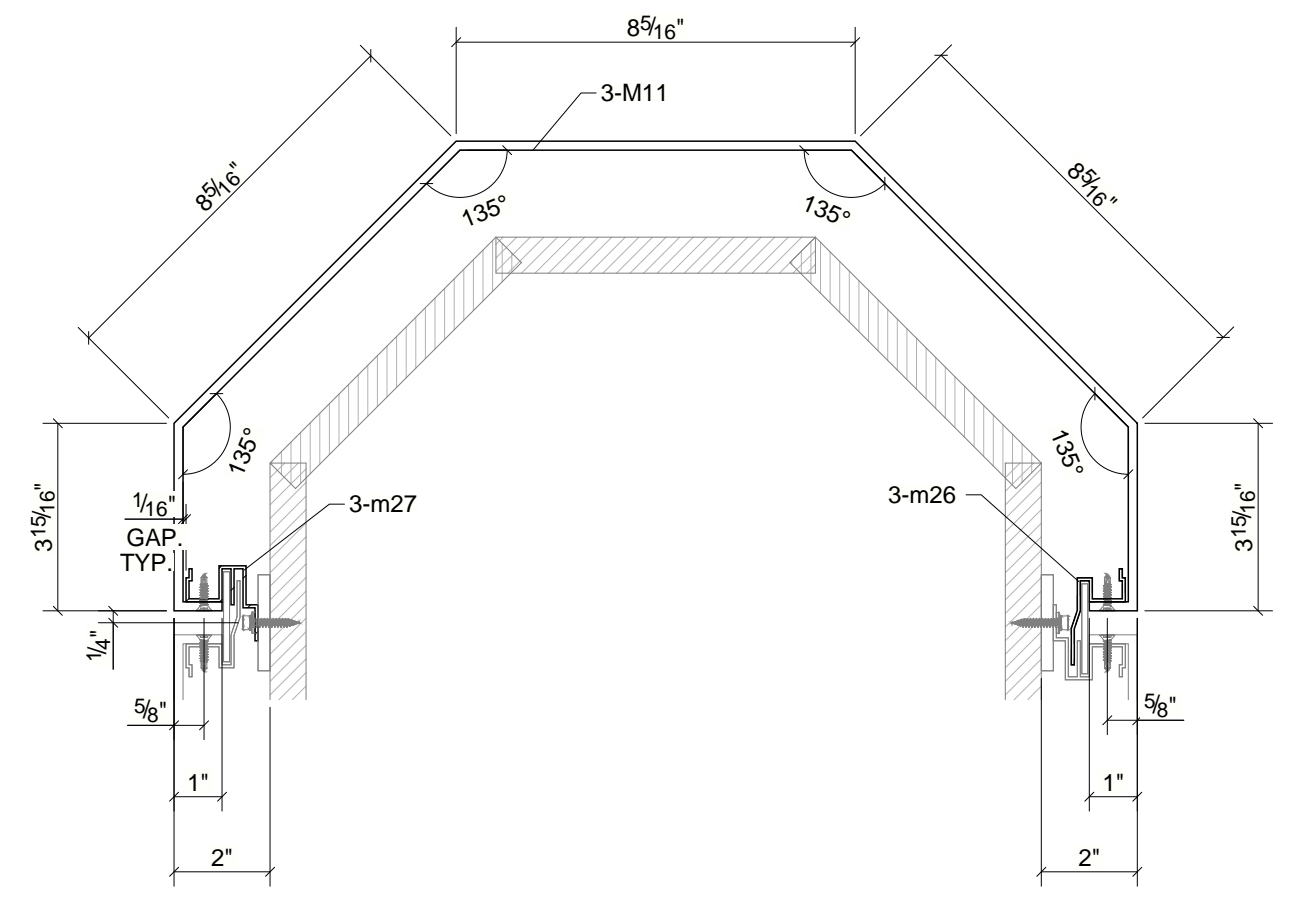
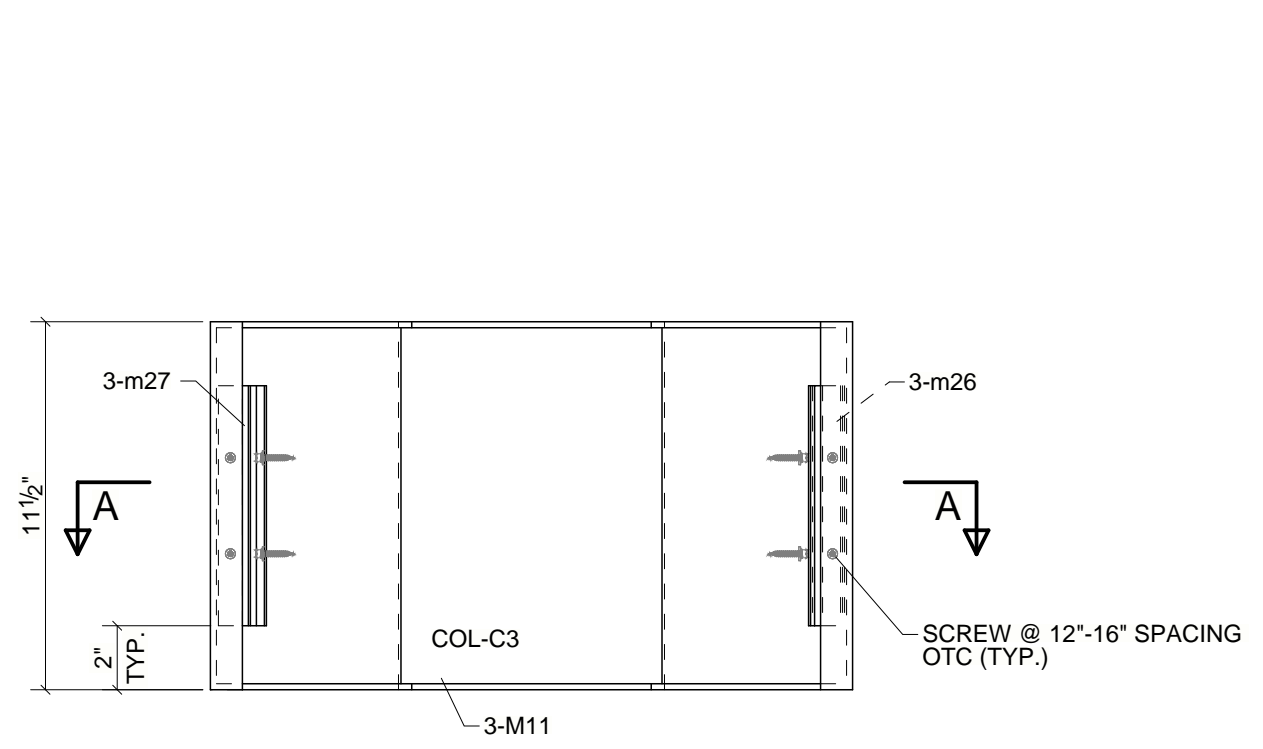
ISSUED FOR FABRICATION

QA/QC HOLD POINTS

	FABRICATOR	DATE	SUPERVISOR	DATE
LAYOUT				
FIT				
WELD				
FINAL				

BILL OF MATERIAL

MARK	QTY	DESCRIPTION	LENGTH	WEIGHT	REMARKS
3-M11	1	ACM_PANEL			
3-M11	1	PL3/16"X11 1/2"	2'-8 1/8"	7.90	6061-T6 ALUMINUM
3-m26	1	ME1/16"	0'-7 1/2"	0.17	6061-T6 ALUMINUM
3-m27	1	FME	0'-7 1/2"	0.23	6061-T6 ALUMINUM
TOTAL WEIGHT THIS DRAWING				8.30	



A - A

ONE - ACM_PANEL - 3-M11

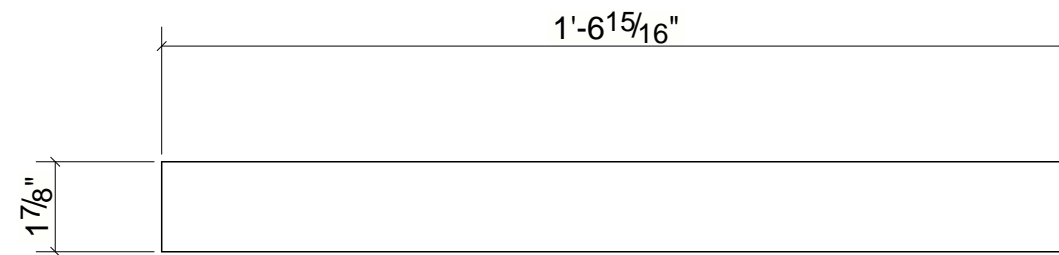
ISSUED FOR FABRICATION

QA/QC HOLD POINTS

	FABRICATOR	DATE	SUPERVISOR	DATE
LAYOUT				
FIT				
WELD				
FINAL				

BILL OF MATERIAL

MARK	QTY	DESCRIPTION	LENGTH	WEIGHT	REMARKS
3-PL1	4	PLATES			
3-PL1	4	PL1/8"X1 7/8"	1'-6 15/16"	1.70	6061-T6 ALUMINUM
TOTAL WEIGHT THIS DRAWING				1.70	



4 - PLATES - 3-PL1

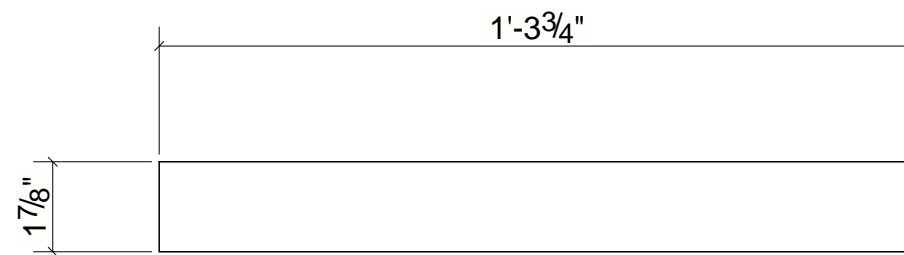
ISSUED FOR FABRICATION

QA/QC HOLD POINTS

	FABRICATOR	DATE	SUPERVISOR	DATE
LAYOUT				
FIT				
WELD				
FINAL				

BILL OF MATERIAL

MARK	QTY	DESCRIPTION	LENGTH	WEIGHT	REMARKS
3-PL2	1	PLATE			
3-PL2	1	PL1/8"X1 7/8"	1'-3 3/4"	0.35	6061-T6 ALUMINUM
TOTAL WEIGHT THIS DRAWING				0.35	



ONE - PLATE - 3-PL2

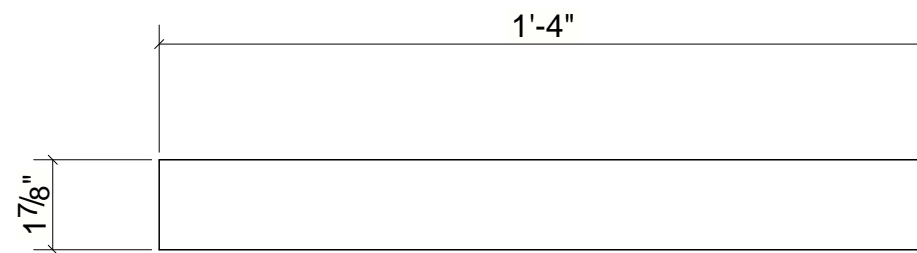
ISSUED FOR FABRICATION

QA/QC HOLD POINTS

	FABRICATOR	DATE	SUPERVISOR	DATE
LAYOUT				
FIT				
WELD				
FINAL				

BILL OF MATERIAL

MARK	QTY	DESCRIPTION	LENGTH	WEIGHT	REMARKS
3-PL3	1	PLATE			
3-PL3	1	PL1/8"X1 7/8"	1'-4"	0.36	6061-T6 ALUMINUM
TOTAL WEIGHT THIS DRAWING				0.36	



ONE - PLATE - 3-PL3

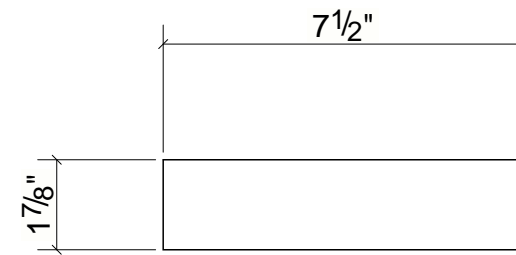
ISSUED FOR FABRICATION

QA/QC HOLD POINTS

	FABRICATOR	DATE	SUPERVISOR	DATE
LAYOUT				
FIT				
WELD				
FINAL				

BILL OF MATERIAL

MARK	QTY	DESCRIPTION	LENGTH	WEIGHT	REMARKS
3-PL4	3	PLATES			
3-PL4	3	PL1/8"X1 7/8"	0'-7 1/2"	0.50	6061-T6 ALUMINUM
TOTAL WEIGHT THIS DRAWING				0.50	



3 - PLATES - 3-PL4